

COMMUNITY FEATURES

- BEAUTIFULLY APPOINTED SENIOR (55+) COMMUNITY WITH CONTROLLED ACCESS TO BUILDING
- GREAT LOCATION: CLOSE TO SHOPPING, GROCERY, BANKS & PHARMACIES
- COVERED PORCH WITH SEATING AREAS
- COMMUNITY CLUBHOUSE WITH MULTI-PURPOSE ROOM WITH FULL KITCHEN FOR EVENTS AND GATHERINGS
- EXERCISE ROOM
- COMPUTER CENTER / LIBRARY
- LAUNDRY CENTER
- ELEVATOR TO ALL FLOORS
- SMOKE FREE COMMUNITY
- PET FRIENDLY- WITH RESTRICTIONS

GLENWOOD GARDENS
2151 GLENWOOD DRIVE
GASTONIA, NC 28054
PH: (704) 215-6713
FAX: (704) 215-6716

GLENWOODGARDENS@EPMSITES.COM

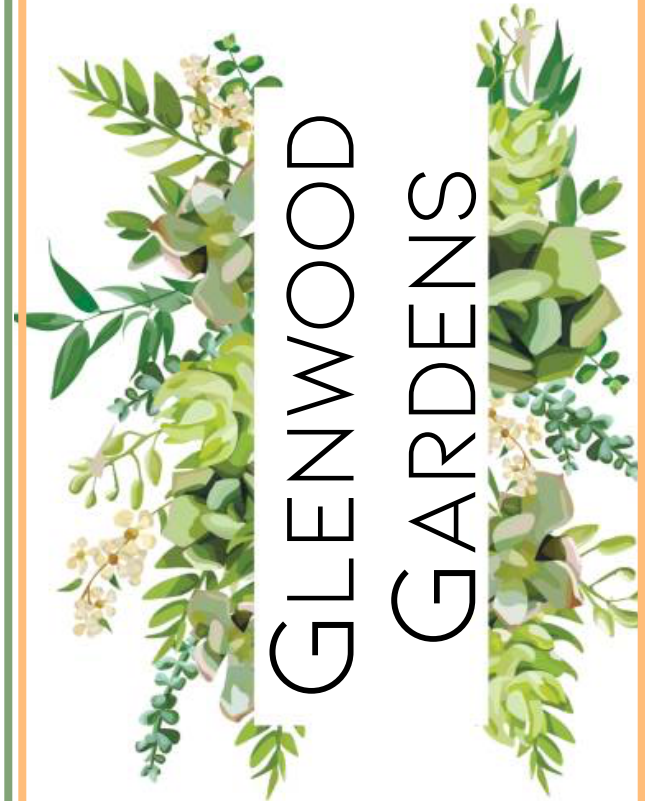


DIRECTIONS: FROM HWY. 74 TURN ON GLENWOOD DRIVE, PROPERTY LOCATED NEAR THE CORNER OF GLENWOOD DR. AND DUNHAM RD., JUST OFF FRANKLIN BLVD.

Professionally Managed By



1004 Bullard Court, Ste. 106
Raleigh, NC 27615
(919) 878-0522



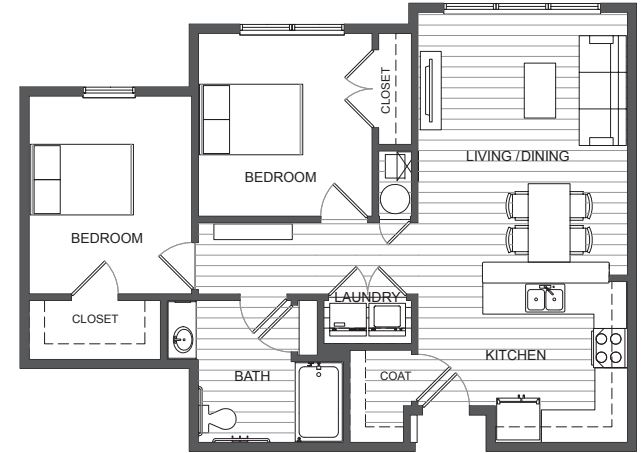
APARTMENT FEATURES



ONE BEDROOM / ONE BATH
STARTS AT 639 SQ. FEET

\$ _____ RENT

- ONE AND TWO BEDROOM APARTMENT HOMES WITH SPACIOUS, OPEN FLOOR PLANS
- ENERGY EFFICIENT APPLIANCES INCLUDING REFRIGERATOR, RANGE AND DISHWASHER
- BREAKFAST BAR
- WASHER AND DRYER HOOK-UPS
- CEILING FANS AND MINI-BLINDS THROUGHOUT
- LUXURIOUS WOOD-GRAIN, VINYL FLOORING IN MAIN LIVING AREAS
- HIGH EFFICIENCY HEAT PUMP PROVIDING CENTRAL HEAT AND AIR
- INTERCOM CALL SYSTEM TO FRONT ENTRY
- WATER, SEWER AND TRASH REMOVAL INCLUDED WITH RENT



TWO BEDROOM / ONE BATH
STARTS AT 900 SQ. FEET

\$ _____ RENT

*SOME FLOOR PLANS MAY VARY FROM WHAT IS SHOWN